

Included.

Inclusion Access Newsletter

Issue 2 / June 2022



Meet the Team

Welcome to our June Newsletter.

My name is Mike D'Arcy, and I am a Director on the Board of Inclusion Access.

I have a child with a disability and have a good understanding of the needs and barriers to those with a disability.

I have been an IT professional for 39 years in various roles including Strategy, Management, Delivery and Governance, and am excited to have the opportunity to contribute my expertise and experience to help those with disabilities participate fully in the community.



Inclusion Access Board Member, Mike D'Arcy

Out and About with Josh

Spicers Peak Lodge, Maryvale

What a spectacular destination!

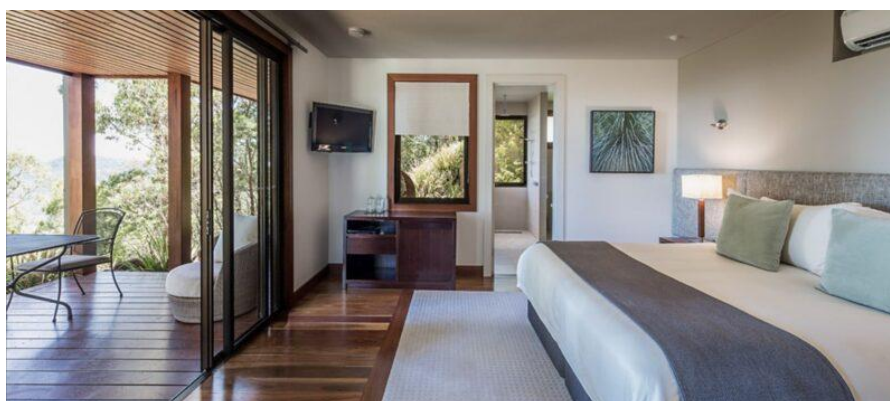
My wife and I were celebrating a 'big' birthday in March and indulged in a trip to the gorgeous Maryvale location.

Set atop a stunning range, this resort blew us away!

Our room had step-free access from the front desk to the lounge and dining area and right on back to our room, with wide hallways and doorways. The accessible bathroom was easy to use with rails and a shower bench chair. Our own private accessible deck looking across the view was mesmerizing.

The staff were wonderful and very accommodating - they arranged a personal 4WD tour of the property as we couldn't access the walking tracks, including a private picnic atop the range with expansive and amazing views.

If you are looking for luxury accommodation for a special occasion, check it out!



[Accessible Lodge Suite - Spicers Retreats](#)

What is SDA?

SDA, or **Specialist Disability Accommodation** is a range of housing options with specific design guidelines for people with extreme functional impairment, or those who require continual support needs. SDA homes have accessible features that allow people to live more independently in the community whilst allowing for needed support providing improved safety.

Funded by the NDIS, eligible participants who qualify for SDA in their package include:

- Those that have an extreme functional impairment and;
- Those that meet SDA specific needs / SDA funding criteria.

The NDIS website The NDIS SDA website discusses SDA rules and the design standards, along with pricing arrangements.

The four categories of design criteria are;

- Improved livability
- Robust
- Fully accessible
- High physical support.

Each of the design categories is defined by specific build materials, appliances, design elements. This ensures SDA housing is not a one-size-fits-all approach, but rather that each home is suitably designed for every individual person's level of ability.

If you would like to learn more about SDA, you can find information on the [NDIS website](#) or contact us.



[Specialist disability accommodation | NDIS](#)

Building Access Update

There is a change in the air which is going to affect many people with disabilities. This is for everybody as it refers to anybody renting or building a new home and will have implications for the entire residential construction industry.

From the 1st of September 2022, there are many improved accessibility features that need to be met when constructing a new home (including dual occupancies, townhouses, apartments, granny flats or any other form of housing. These features have been inspired by the [Silver Level Livable Housing Australia \(LHA\) Guidelines](#).

These features include:

- Step-free access from the street and parking areas
- Step-free entrance into the building
- Internal doors and corridors needed to facilitate comfortable and unrestricted movement between all spaces
- A toilet on the ground/entry level providing easy access
- A bathroom with a hobless shower recess
- Reinforced walls in toilet and shower that may support future installation of grabrails (at later date)
- Stairways that reduce likelihood of injury and enable future modification.

This significant alteration to the National Construction Code (NCC) is potentially the largest, most effective amendment ever imposed.



Photo: Ben Wrigley (© Light House Architecture and Science)

Our Board

We have recently expanded our Board membership to 5 Directors. The current Board members are:

- Josh Marshall
- Mike D'Arcy
- Liz Schneidewin
- Coralie Graham
- Sharon Boyce.

Have you visited our website?

Our website, [Inclusion Access](http://www.inclusionaccess.com.au), is being updated as we visit local restaurants, cafes and venues that have inclusion features and practices.

Do you need to know where you can visit and have your needs accommodated? With our website you can search local options to eat, stay and play with the ability to search for the features you require. Accessible parking, accessible toilets, step free entry, inclusive attitudes and many other features can be added to your search to meet your needs.

We have commenced planning the redevelopment of the website to provide you with simple to use search functions and a feature-rich mapping facility to help you to navigate to your chosen venue.



[Inclusion Access Website](http://www.inclusionaccess.com.au)

Contact Us

Toowoomba, Queensland

Email

contact@inclusionaccess.com.au

Website

www.inclusionaccess.com.au

Facebook

www.facebook.com/inclusionaccess/